



COMPOSITE GRAPH

Select a Pattern

Ratio of Oil from 20 Board to Displayed Board							
20:2L	20:5L	20:10L	20:15L	20:15R	20:10R	20:5R	20:2R
3,75	2,73	1,58	1,11	1,11	1,58	2,73	3,75

[Print](#)
[Help](#)

Oil Per Board

Selection 1

Selection 2

Ratio

Forward Oil Total

ml

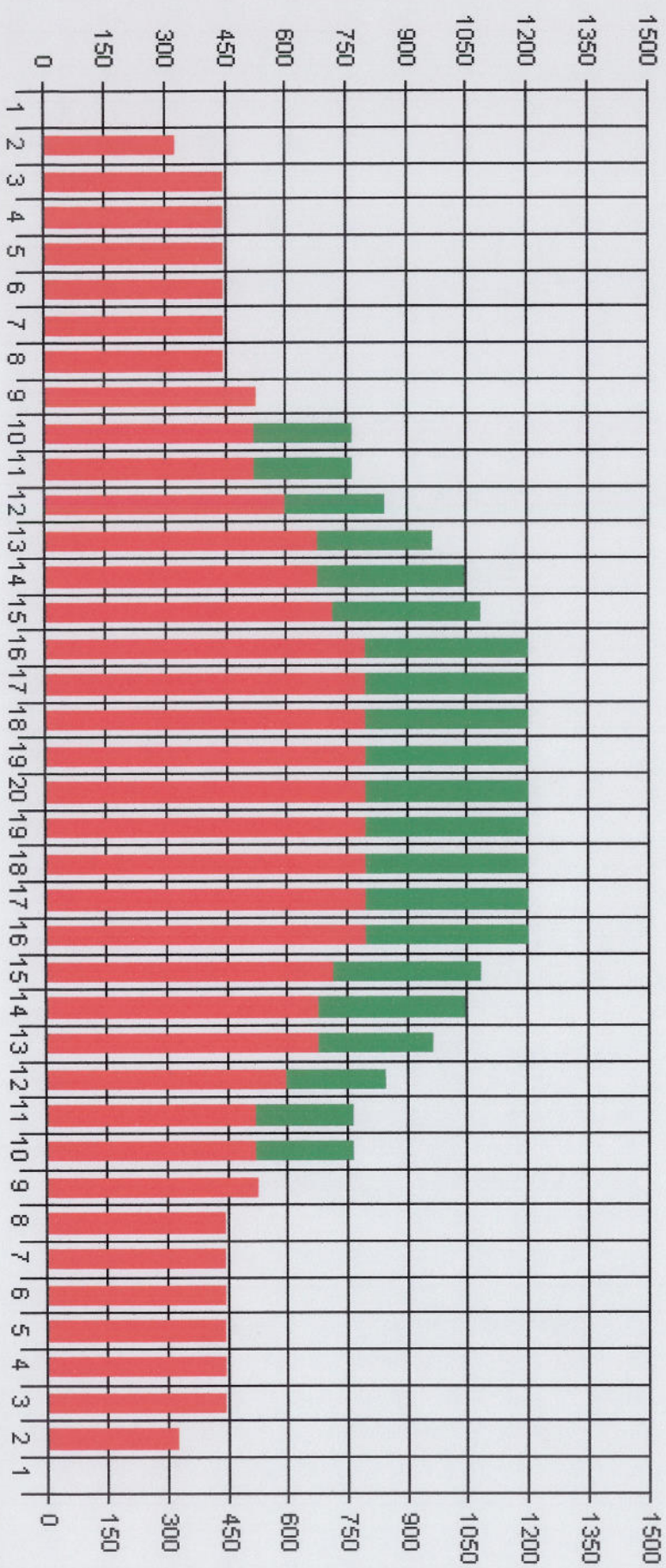
Reverse Oil Total

ml

Volume Oil Total

ml

Oil Pattern Distance





Select a Pattern

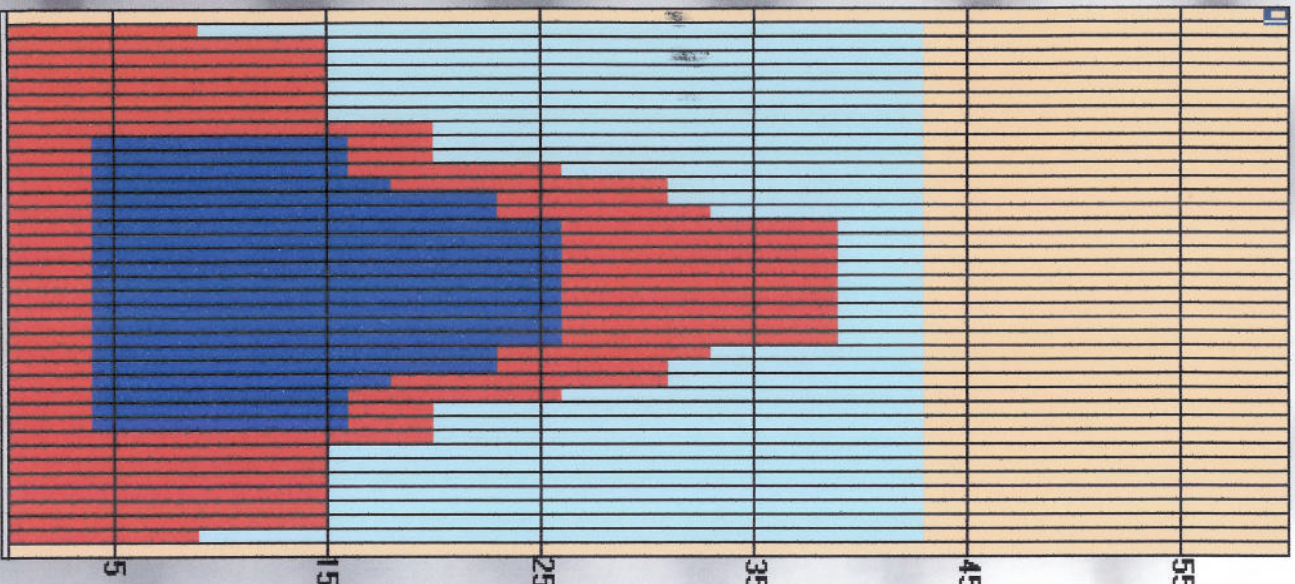
Winterslaget 10

Forward Oil Total

21.60 ml

Forward Boards Crossed

540



	Start	Stop	Loads	Speed	Crossed	Start	End	Feet	T Oil
1	2L	2R	8	10	296	0	9	9	11840
2	3L	3R	3	14	105	9	15	6	4200
3	9L	9R	2	18	46	15	20	5	1840
4	12L	12R	2	18	34	20	26	6	1360
5	13L	13R	2	18	30	26	31	5	1200
6	15L	15R	1	14	11	31	33	2	440
7	16L	16R	2	22	18	33	39	6	720
8	2L	2R	0	30	0	39	43	4	0
9									
10									
11									
12									
13									
14									
15									

	Start	Stop	Loads	Speed	Crossed	Start	End	Feet	T Oil
1	2L	2R	0	30	0	43	26	-17	0
2	16L	16R	1	18	9	26	23	-3	360
3	14L	14R	2	18	26	23	18	-5	1040
4	13L	13R	1	14	15	18	16	-2	600
5	10L	10R	3	14	63	16	10	-6	2520
6	10L	10R	3	14	63	10	4	-6	2520
7	2L	2R	0	10	0	4	3	-1	0
8	2L	2R	0	10	0	3	0	-3	0
9									
10									
11									
12									
13									
14									
15									

Reverse Oil Total

7.04 ml

Print

Help

Oil Per Board 40
 Oil Pattern Distance 43
 Volume Oil Total 28.64 ml
 Total Boards Crossed 716

Double Click to change a Color on the graph.

- Forward Oil
- Reverse Oil
- Combined Oil
- Buff Area

Reverse Boards Crossed

176