



KEGEL NAVIGATION PATTERNS

CHALLENGE SERIES

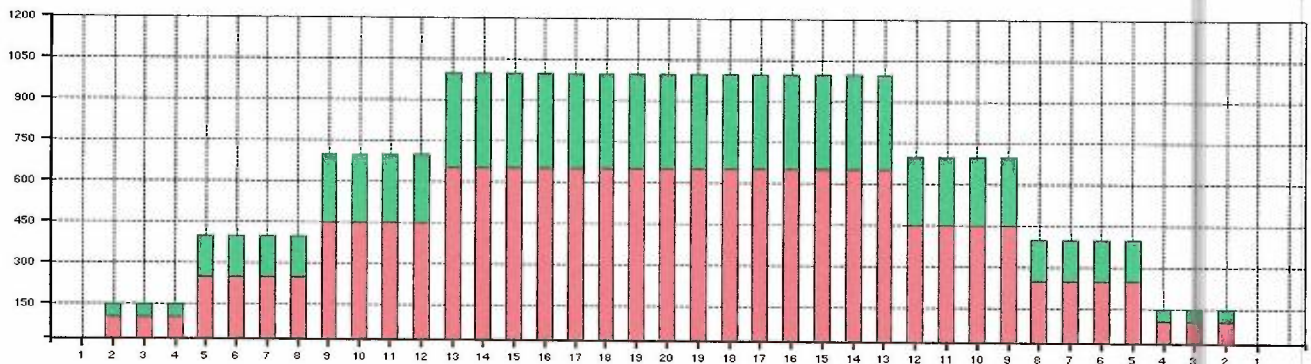
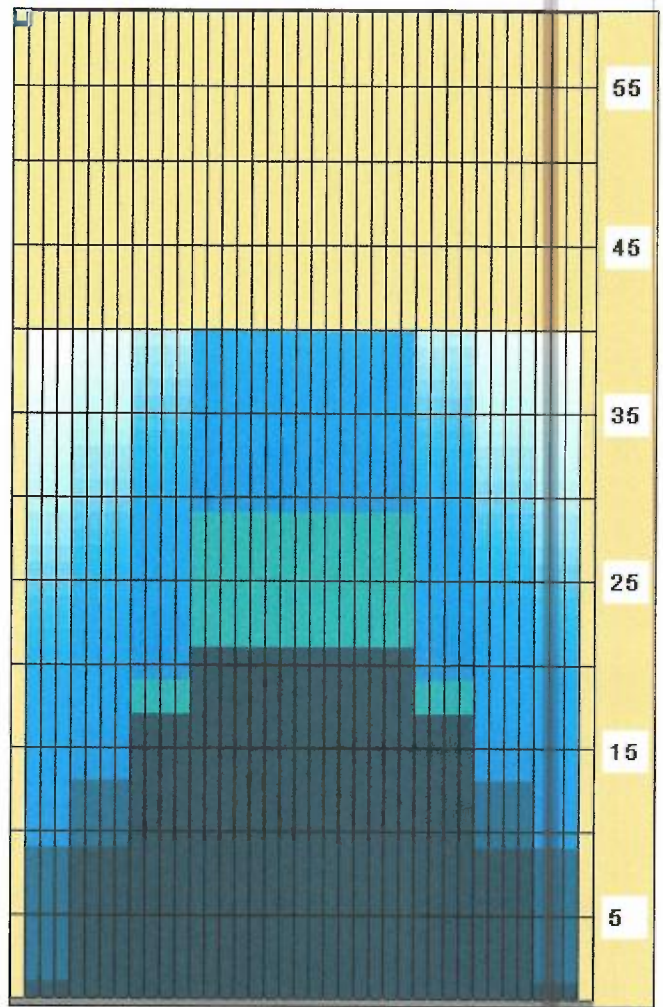


SUNSET STRIP 3240

The charts on this page are generated by Kegel's KOSI software from the lane machine program sheet.

The **OVERHEAD CHART** on the right shows where the conditioner is applied on both the forward and reverse screens. The gradient area is a calculation of how the conditioner might bleed off the buffer brush.

The **COMPOSITE GRAPH** below shows the total amount of conditioner applied to every board. A good way to think about this graph is to envision all the conditioner on the lane being pushed back to the foul line. Once all the conditioner is stacked up, this is what it would look like.





KEGEL NAVIGATION PATTERNS

CHALLENGE SERIES



SUNSET STRIP 3240

Kegel Sanction Technology™ Lane Machine Settings

Oil per Board (Pump Setting): 50 µL

Pattern Distance: 40 feet

Reverse Drop Brush: 32 feet

Forward Settings										
Screen #	Left End of Stream	Right End of Stream	# Loads or Streams	Travel Speed (in/sec)	Beginning Distance of Load (feet)	Ending Distance of Load (feet)	# Boards Crossed per Load	Total Boards Crossed	Total Volume of Oil (µL)	
01F	2	2	2	14.00	0.00	1.90	37	74	3700	
02F	5	5	3	18.00	1.90	9.50	31	93	4650	
03F	9	9	4	18.00	9.50	19.70	23	92	4600	
04F	13	13	4	18.00	19.70	29.90	15	60	3000	
05F	2	2	0	18.00	29.90	33.00	0	0	0	
06F	2	2	0	22.00	33.00	40.00	0	0	0	
07F										
08F										
09F										
Forward Buff Screens: 2			Forward # Boards Crossed Volume mL					319	15.95	
Reverse Settings										
Screen #	Left End of Stream	Right End of Stream	# Loads or Streams	Travel Speed (in/sec)	Beginning Distance of Load (feet)	Ending Distance of Load (feet)	# Boards Crossed per Load	Total Boards Crossed	Total Volume of Oil (µL)	
01R	2	2	0	30.00		21.00	0	0	0	
02R	13	13	2	14.00	21.00	17.10	15	30	1500	
03R	9	9	2	14.00	17.10	13.20	23	46	2300	
04R	5	5	2	14.00	13.20	9.30	31	62	3100	
05R	2	2	1	10.00	9.30	7.90	37	37	1850	
06R	2	2	0	10.00	7.90	0.00	0	0	0	
07R										
08R										
09R										
Reverse # Boards Crossed Volume mL								175	8.75	
Forward plus Reverse Boards Crossed Volume mL								494	24.70	

